

---

# PRODUCT CATALOG

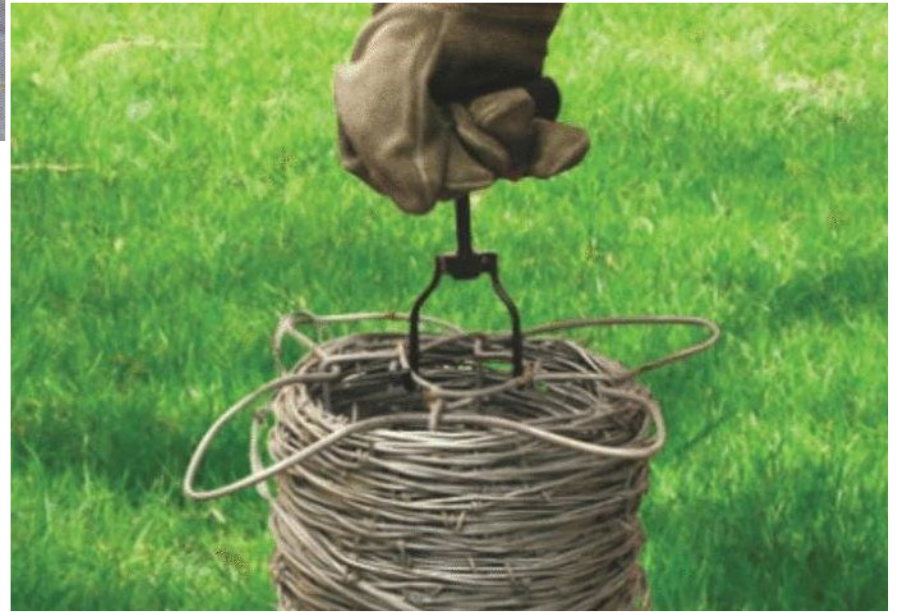
---



**YOUR AGRICULTURAL PARTS CONNECTION**







## About Us

- **AgKNX** - AgKNX is committed to bringing attractive creative products and high-quality services with innovative technology and competitive prices to customers across the globe. Quality is the foundation of AgKNX and innovation fuels our growth and sustainable development. Behind the AgKNX brand is over 30 years of expertise in manufacturing agricultural machinery and outdoor power equipment. Our company brings together established U.S. design and engineering with incomparable overseas manufacturing experience supplying quality products for decades. AgKNX stands for a sincere pursuit of integrity, dedication, innovation and stability. Our factory is located in Jiangsu China and brings decades of product development experience. A future manufacturing site in Monterey, Mexico may help reduce shipping freight and improve our already quick manufacturing response time and lower overall cost.

Feel free to contact us for: customer and distributor inquiries, technical support, questions/comments.



# Agenda

- **3-Point Post Hole Diggers** ..... 04-05
- **Augers for 3-Point Post Hole Diggers** ..... 06
- **Skid Steer Digger** ..... 07
- **Hex Drive Auger Bits** ..... 08
- **Quick Hitch** ..... 09
- **Truck Bed Hay Spear** ..... 10
- **Dump Trailer Kits** ..... 11
- **PTO Drivelines** ..... 12
- **Linkage Parts** ..... 13-15
- **Portable Hydraulic Power Pack** ..... 16
- **Hydraulic Reservoirs** ..... 17
- **Gasoline OHV Engines** ..... 18
- **Hydraulic Tie Rod Cylinders** ..... 19-20
- **Log Splitter Cylinders** ..... 21
- **Log Splitter Pumps & Valves** ..... 22
- **Pump Mounts & Couplers** ..... 23
- **Hydraulic Filters** ..... 24
- **Trailer Jacks** ..... 25
- **Hand Held Earth Augers** ..... 26
- **Gate & Fence Hardware** ..... 27-28
- **Retail Location Order** ..... 29
- **Contact Info** ..... 30

# 3 Point Post Hole Diggers



**Model 400**



Tractor mounted digger systems include a boom, A-frame, gear box, PTO driveline with safety shields, manual canister, and all necessary pins and bolts. All models have an adjustable boom/A-frame connection. Diggers come in individual crates, which can also fit one auger up to 9" or 12" depending on the model and crate ordered.



**Model 650**



# 3 Point Post Hole Diggers



**Model 1000**



**Model 1500**



**18"**

Model	Model 400 Compact	Model 650 Standard Duty	Model 1000 Heavy Duty	Model 1500 Extra Heavy Duty
SKU	24-0361	24-0362	24-0318	24-0337
Category	0 & 1	1	1	1 & 2
Boom Length	56"	60"	72"	72"
Tubing Diameter	2-7/8"	2-7/8"	2-7/8"	3-1/4"
Draw Pin Width	20"	27"	27"	32-1/2"
Driveline	Series 1	Series 1	Series 4	Series 4
Gearbox	2.9:1	2.9:1	2.9:1	3.18:1
Auger Diameters	6", 9", 12" (3' length)	6", 9", 12"	6", 9", 12", 18", 24"	6", 9", 12", 18", 24"
Weight	150 lbs	160 lbs	200 lbs	235 lbs
SKU	24-0361	24-0362	24-0318	24-0337
Features	4 Positions	3 Positions	4 Positions	4 Positions

# Augers for 3-Point Post Hole Diggers



**9" Standard**



**24"**



**18"**

Auger Diameter	Duty & Length	Weight	SKU
6"	Compact - 36"	21	23-033
9"	Compact - 36"	32	23-035
12"	Compact - 36"	43	23-037
6"	Standard - 48"	23	23-032
9"	Standard - 48"	34	23-034
12"	Standard - 48"	49	23-036
6"	Heavy - 48"	31	23-040
9"	Heavy - 48"	42	23-041
12"	Heavy - 48"	60	23-042
18"	Heavy - 48"	99	23-043
24"	Heavy - 48"	125	23-044



# Skid Steer Digger



## Industrial duty skid steer post hole digger with a multifunctional mounting plate.

- A bolted on cradle stabilizes the hydraulic powerhead in between job sites.
- Full size and mini skid steer size available
- 2" hex drive
- Swivel mounted to drill straight up and down, even on side slopes
- Grease zerks on pivot points to provide a long life
- Includes quick connect fittings and hoses
- Multifunctional mounting plate
  - Receiver tow hitch
  - Hay spear attachment
  - Fork lift tine attachment
- Many auger sizes available

Model	HP21	HP27	HP41	HP49
SKU	24-0411	24-0412	24-0413	24-0414
Max Torque	1400 ft-lb	2000 ft-lb	3000 ft-lb	3600 ft-lb
Max Flow	23 gpm	23 gpm	23 gpm	23 gpm
Max Pressure	4000 psi	4000 psi	4000 psi	4000 psi
Max Speed	153 RPM	110 RPM	71 RPM	55 RPM



# Hex Driver Auger Bits



**Rock auger  
with carbide  
bullet teeth**



**Earth auger  
with fishtail tip**



**Dirt auger**



**C21 Bullet  
Teeth**



**C21H Bullet  
Teeth**



**Fishtail Pilot**



**Rock Auger  
Pilot**



**40/50 Teeth**



**35C & C35 Teeth**

Type	Size	SKU
Rock Augers		
Extra Heavy Duty	6"	AUGS106
10mm sectional flighting	9"	AUGS109
3.5" OD Tube	12"	AUGS112
Carbide bullet teeth	15"	AUGS115
4 tooth rock pilot tip	18"	AUGS118
Earth Augers		
Heavy Duty	6"	AUGS006
6mm sectional flighting	9"	AUGS009
2.37" OD Tube	12"	AUGS012
Pound in teeth	15"	AUGS015
Fishtail pilot tip	18"	AUGS018
Dirt Augers		
3.5mm flighting	6"	AUGSL06
2.37" OD Tube	9"	AUGSL09
Bolt on teeth	12"	AUGSL12
Spiral pilot tip		
40/50 Teeth		AUGS4050
35C Teeth		AUGS35C
C35 Teeth		AUGSC35
C21 Bullet Teeth		AUGSC21
C21H Bullet Teeth		AUGSC21H
Rock Auger Pilot w/ Bullet teeth	4 tooth	AUGS4TRP
Fishtail Pilot Tip		AUGSFTTS
Auger Extention - Hex Drive	48"	AUGS48E
	60"	AUGS60E



# Quick Hitch



**AgKNX** quick hitches allow you to switch and attach your implements quickly and easily

- Built to ASAE standards
- Mounting pins and adapter bushings (if applicable) are included
- Full line from CAT 1 to CAT 3
- CAT 1 comes with an adjustable hook



Category	Inner Diameter	SKU
I	7/8"	QHT101
II	1-1/8"	QHT102



Category	Max HP	Width (W)	Lower Hook to	Lower to Up-	Weight (lbs)	SKU
			Top Link (H)	per Hook (L)		
I	50	27.25	18.5	15-18.5	80	25-005
II	100	32.75	21.5	15	139	25-010
II HD	150	32.5	21.5	15	165	25-019
III	225	38.25	24.5	19	182	25-020
III Narrow	225	32.5	24.5	19	176	25-021
II/III	225	38.25	24.5	19	185	25-022

# Truck Bed Hay Spear



## FEATURES:

- 112V power unit w/ remote
- Wide range of motion
- Durable, reinforced construction
- Easily adjustable
- Weather and damage resistant power unit housing
- 3" cylinder provides high lifting capacity
- Includes 2 tines and all mounting hardware

Power Unit	Double Acting w/ Flow Control
Hydraulic Tank	5 Liter
Cylinder	3" Bore x 16" Stroke
Control	Remote w/ 15' Cable
Spears	48" Length
Power	12 V, 20 Cables w/ Power Connector
SKU	26-010



# Dump Trailer Kits



Dump trailers make hauling scrap, waste, debris away easy. Dump trailers use a unique scissor hydraulic lift system to lift the trailer bed so you can quickly unload your trailer. There is no heavy lifting or jumping into the trailer to unload everything.

**3 sizes available: 3 Ton, 6 Ton & 10 Ton AgKNX dump trailer kits includes:**

- Hydraulic Power Unit
- Hoist Assembly (steel frame and hydraulic cylinder)
- Hydraulic Hose Assembly (6.5' each)
- Hydraulic Fittings
- Failure preventative valve
- Safety Arm
- Remote control with (5' cable)

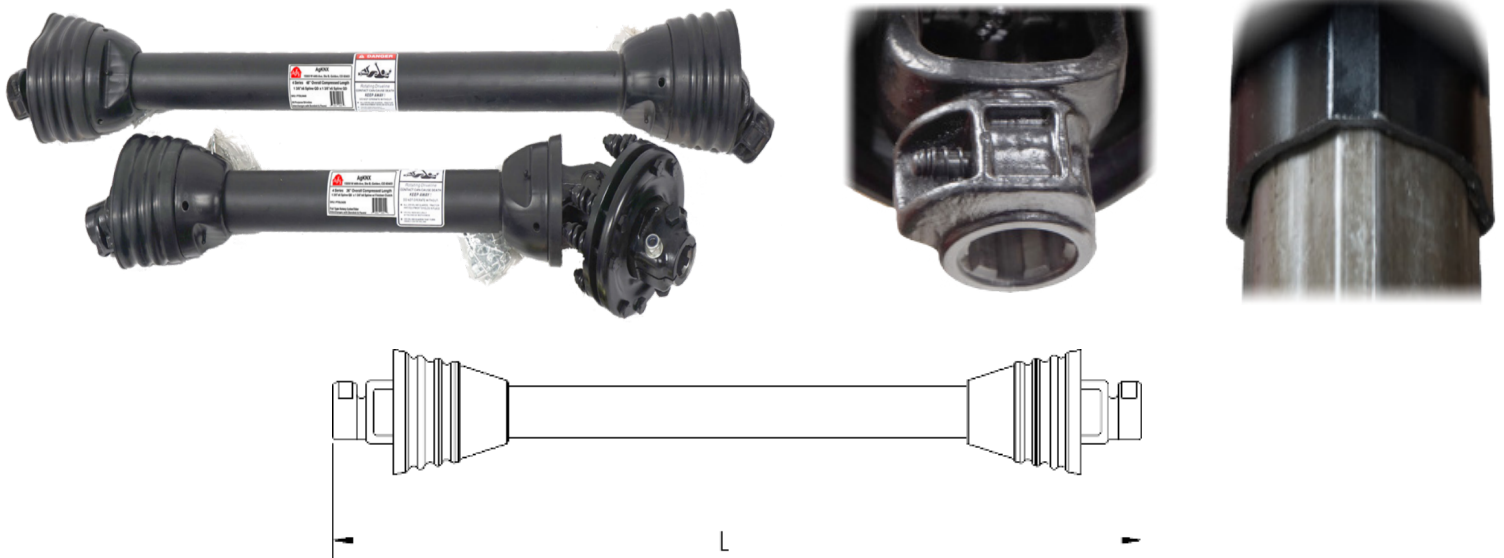


SKU	Rating	Pressure	Power	Cycle Time
26-200	3 Ton	2320 psi	2.2 kw	22 sec
26-201	6 Ton	2320 psi	2.2 kw	40 sec
26-202	10 Ton	2320 psi	2.2 kw	50 sec

# PTO Drivelines



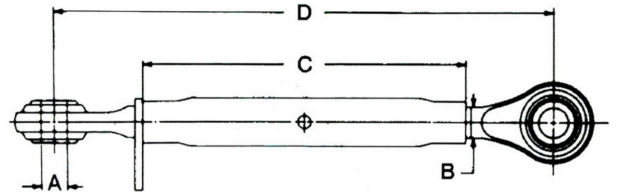
- The PTO shafts are built strong to last
- Feature a quick disconnect 1-3/8" 6-spline that mounts to standard tractors
- Adjustable telescoping tube can handle high load demands given by the series designation
- Used on a variety of equipment from post hole diggers, spreaders, tillers, mowers, etc.
- Interchangeable with other manufacture



**NOTE: Drivelines can easily be cut down to shorter lengths.**

Series	Shortest Length	Extended Length	Tractor End	Implement End	Common Uses	SKU
1	27	34	1-3/8" x 6 QD	1-3/8" x 6 QD	Fertilizer Spreader	27-010
3	40	54	1-3/8" x 6 QD	1-3/8" x 6 QD	Finishing Mower, Tiller	27-011
4	30	40	1-3/8" x 6 QD	1-3/8" Round	Finishing Mower, Tiller	27-012
4	32	42	1-3/8" x 6 QD	1-3/8" Round	Rotary Cutter	27-013
4	36	43	1-3/8" x 6 QD	1-3/8"x6 Clutch	Rotary Cutter, Tiller	27-014
4	37	50	1-3/8" x 6 QD	1-3/8" Round	Rotary Cutters, Pond	27-015
4	42	58	1-3/8" x 6 QD	1-3/8" Round	Post Hole Digger	27-016
4	48	65	1-3/8" x 6 QD	1-3/8" x 6 QD	Post Hole Digger	27-017
4	53	74	1-3/8" x 6 QD	1-1/4" Round	Post Hole Digger	27-018
5	42	57	1-3/8" x 6 QD	1-3/8" Round	Rotary Cutters	27-019
12	48	64	1-3/8" x 6 QD	1-1/4" Round	Heavy Duty Digger	27-020
14	37	49	1-3/8" x 6 QD	1-3/8" Round	Post Hole Digger	27-021
14	56	77	1-3/8" x 6 QD	1-3/8" Round	5' & 6' Pull Cutters	27-022

# Linkage Parts



## Forged Top Links

Category	A Pin Hole	B Threads	C Body	D Open	D Closed	Weight (lbs)	SKU
0	5/8"	3/4" NC	9.5"	18"	13"	2.7	LKTL001
0	5/8"	3/4" NC	7.5"	16"	11"	2.5	LKTL002
I	3/4"	1-1/8" NC	16"	28"	21"	7.6	LKTL101
II	1"	1-1/8" NC	16"	31"	21"	10	LKTL201
II	1"	1-1/4" NC	16"	32"	23"	12	LKTL202
III	1-1/4"	1-3/8" NC	19.5"	37"	25.5"	20	LKTL301



## Lift Arms

Category	Description	Pin Holes	Ball Center to Center Distance	Overall Length	Weight (lbs)	SKU
I	Forged lift arm, right or left side	7/8"	31-3/4"	34-1/2"	11.7	LKLA101

## Top Link Bushings



Category	Inner Diameter	Outer Diameter	Length	SKU
I	3/4"	1"	1-15/16"	LKTB101
II	1"	1-1/4"	1-15/16"	LKTB201

## Lift Arm Bushings Fit over the draw pins and in the lift arm



Category	Draw Pin Diameter	Lift Arm Diameter	Length	SKU
I	7/8"	1-1/8"	1-3/4"	LKLA001
II	1-1/8"	1-1/2"	1-3/4"	LKLA002



# Linkage Parts



Category	Description	Usable Length	Pin Diam.	Overall Length	Weight (lbs)	SKU
I	Cat. 1 Pin (Ford 9N-560, Ferguson 195647M1)	2-3/4"	3/4"	4-1/2"	0.5	LKTP101
I	Cat. 1 Long Pin (Ferguson 195589M1, AC339942)	3-7/8"	3/4"	5-1/2"	0.6	LKTP102
I	Cat. 1 Extra Long Pin (Ford E381T9)	4-3/4"	3/4"	6-3/8"	0.8	LKTP103
II	Cat. 2 Pin (Ford C5NN486A)	4-3/8"	1"	6"	1.3	LKTP201

Usable Length	Pin Diam.	Overall Length	Weight (lbs)	SKU
3-5/8"	1/2"	6-5/8"	0.7	LKCP050
5-3/4"	5/8"	9"	1.1	LKCP063
6-1/2"	7/8"	9-1/2"	1.9	LKCP089
7-1/2"	1"	10"	2.6	LKCP100
8-1/2"	1-1/8"	11-1/2"	3.3	LKCP113
8-1/2"	1-1/4"	11-1/2"	4.1	LKCP125

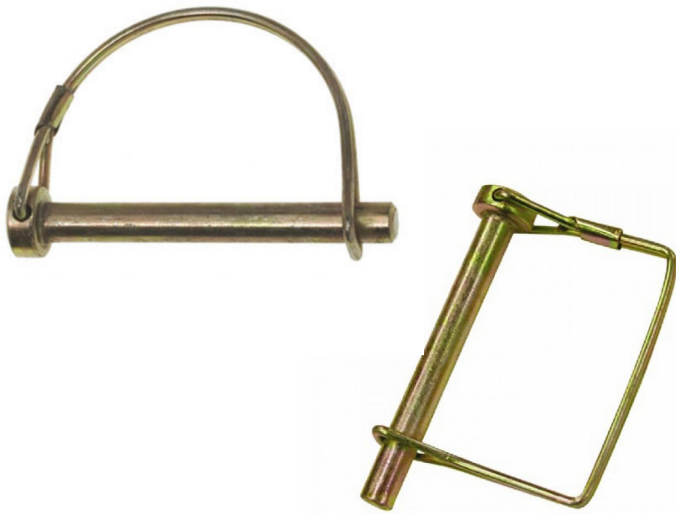
Tractor Drawbar Grab Hook	Working Load Limit (lbs)	Weight (lbs)	SKU
For drawbars up to 1-5/8" thick. Use with 5/16" to 1/2" chain.	9,000 - NOT FOR OVERHEAD LIFTING	3.1	LKGH163

# Linkage Parts



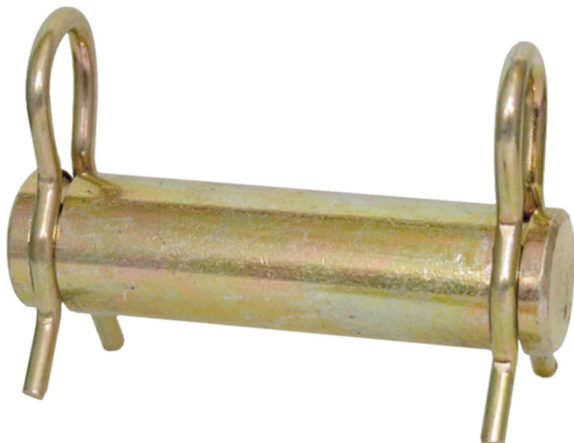
## Lynch Pins

Usable Length	Pin Diam.	Overall Length	Weight (lbs)	SKU
1"	3/16"	1-5/8"	0.03	LKLP019
1-1/4"	1/4"	2-1/8"	0.07	LKLP025
1-1/2"	7/16"	2-1/8"	0.13	LKLP044L



## Lock Pins

Usable Length	Pin Diam.	Wire Loop	Weight (lbs)	SKU
1-3/4"	1/4"	Round	0.06	LKLP175R
2-1/4"	5/16"	Square	0.2	LKLP225S
2-1/4"	5/16"	Round	0.1	LKLP225R



## Hydraulic Cylinder Pins with Clips

Usable Length	Pin Diam.	Overall Length	Weight (lbs)	SKU
2"	1"	2-3/4"	0.6	LKHC120
3-1/8"	1"	4"	0.9	LKHC131

# Portable Hydraulic Power Pack



The AgKNX Portable Hydraulic Pack (PHP) is a stand alone source for hydraulic power. It can be used to replace a tractor or skid steer as a source of power for remote hydraulic applications, or to use hydraulic power where it wouldn't otherwise be possible. Made with our selection of rugged components and assembled with safety and ease of use at the forefront.

## FEATURES:

- Electric Or Manual Start options
- Removable handle on one side allows fitting other handling devices
- Magnetic drain plug for hydraulic tank
- Return filter extends life of hydraulic fluid, your PHP, and implement being used
- Rubber feet keep PHP in place and absorb shocks during transport
- Available with electric start engine
- Wide-mouth fill port on tank



	PHP50	PHP100
Engine	7.5 HP / 212cc	9 HP / 270cc
Hydraulic Tank	5.6 Gallons	10.2 Gallons
Hydraulic Pump	7.1 gpm, single stage	7.1 gpm, single stage Control Valve 2-way,
25 gpm, 3000 psi action	25 gpm, 3000 psi action	1-way 1000 psi (adjustable) detent 1-way 1000 psi (adjustable) detent
Max Output Pressure	900 psi	1200 psi
Electric Start Optional	Yes (PHP50E)	Yes (PHP100E)



1/2" quickconnect Ag fittings are replaceable by other fittings of choice. The valve has 1/2" Female NPT fittings in which other fittings can be installed.

Two female Ag fittings that simulate a tractor are included standard.



# Hydraulic Reservoirs



**7 Gallon**



**15 Gallon**



**25 Gallon**



These baffled hydraulic tanks can be used on a large variety of applications. They feature a large fill port with breather cap, a drain plug, and two fluid transfer ports. The mounting brackets cover a range of mounting options. They feature interlocking design to minimize welding, and a temperature gauge that is also a fluid level window.

Reservoir Size	Depth	Width	Height	Mount Hole Pattern (Ctr-to-ctr)	Mouting Bracket	Ports	Weight	SKU
7 Gallon	14"	15.89"	Width	9.89"	Bottom	1.25" NPT	41.5 lbs	HTP7
	14"	11.75"	Height			2" NPT		
	11.75"							
15 Gallon	13.5"	18"	Width	13.75"	Rear	1.25" NPT	56.5 lbs	HTP15
	15.5"	17.5"	Height			2" NPT		
	17.5"							
25 Gallon	15"	23.25"	Width	14.5"	Rear	1.25" NPT	72 lbs	HTP25
	20.5"	18.5"	Height			2" NPT		
	18.5"							

# Gasoline OHV Engines



These high quality 4 stroke engines start easily even in cold weather and run reliably. All engines are EPA certified and come with a manual and spark plug wrench in a padded box. Replacement parts available.



**DH212E**

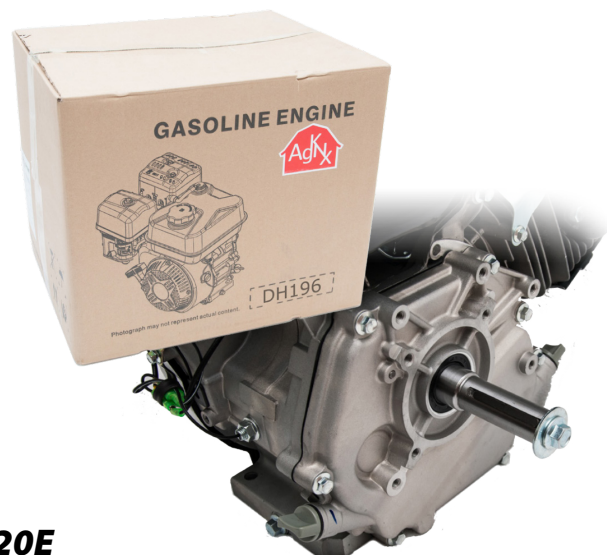


**DH270**

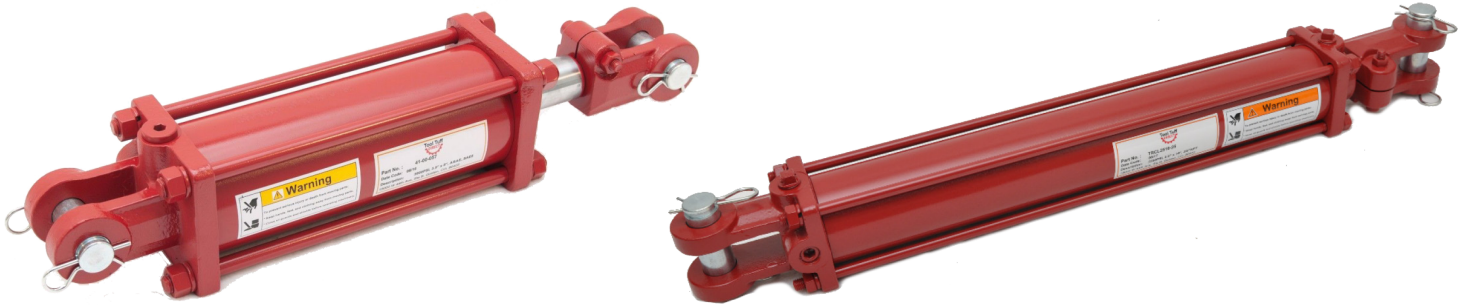
Engine Size	Horse Power	Torque (ft-lb)	Shaft Diameter	Shaft Length	PTO Bolt Pattern	Starter	Weight (lbs)	SKU
212cc	7.5	13.5	3/4"	2-7/16"	2.5" Square	Recoil	32	DH212
212cc	7.5	13.5	3/4"	2-7/16"	2.5" Square	Electric	36	DH212E
270cc	9	12.2	1"	3.5"	Ø 112mm	Recoil	55	DH270
270cc	9	12.2	1"	3.5"	3.5" Square	Electric	59	DH270E
420cc	15	19.5	1"	3.5"	3.5" Square	Electric	68	DH420E



**DH420E**



# Hydraulic Tie Rod Cylinders



**2500 psi** double acting tie rod cylinder.

Both ends have a 1" pin. Rod ends are threaded. All dimensions are in inches.

Bore Diameter	Stroke Length	Rod Diameter	Retracted Length	Extended Length	Ports	Weight (lbs)	SKU
2	6	2001/1/8	16.25	22.25	3/8" NPT	15	TRCL2006NPT
2	8	2001/1/8	18.25	26.25	3/8" NPT	17	TRCL2008NPT
2	10	2001/1/8	20.25	30.25	3/8" NPT	19	TRCL2010NPT
2.5	8	2001/1/8	18.25	26.25	3/8" NPT	20	TRCL2508NPT
2.5	16	2001/1/8	26.25	42.25	3/8" NPT	29	TRCL2516NPT
2.5	24	2001/1/8	34.25	58.25	3/8" NPT	34	TRCL2524NPT
3	8	2001/1/4	18.25	26.25	1/2" NPT	27	TRCL3008NPT
3	8 ASAE	2001/1/4	20.25	28.25	1/2" NPT	28	TRCL3008A
3	12	2001/1/4	22.25	34.25	1/2" NPT	32	TRCL3012NPT
3	14	2001/1/4	24.25	38.25	1/2" NPT	35	TRCL3014NPT
3	16	2001/1/4	26.25	42.25	1/2" NPT	37	TRCL3016NPT
3.5	8 ASAE	2001/1/4	20.25	28.25	1/2" NPT	32	TRCL3508A
3.5	16	2001/1/4	26.25	42.25	1/2" NPT	48	TRCL3516NPT
3.5	30	1-1/2"	40.25	70.25	1/2" NPT	62	TRCL3530NPT
3.5	36	1-1/2"	46.25	82.25	1/2" NPT	70	TRCL3536NPT
4	8	1-1/2"	18.25	26.25	1/2" NPT	42	TRCL4008NPT
4	16	1-1/2"	26.25	42.25	1/2" NPT	62	TRCL4016NPT
4	24	1-1/2"	34.25	58.25	1/2" NPT	79	TRCL4024NPT

**Custom Options** are available on volumes over 50 with a two month lead time.



# Hydraulic Cross Tube Cylinders



**3000 psi** double acting tie rod cylinder. All dimensions are in inches.

Bore Diameter	Stroke Length	Rod Diameter	Retracted Length	Extended Length	Cross Tube I.D.	Ports	SKU
1.5	16	1"	24	40	3/4"	SAE-6	CTCL1516
2	8	1-1/4"	16	24	1"	SAE-6	CTCL2008
2	18	1-1/4"	26	44	1"	SAE-6	CTCL2018
2.5	6	1-1/2"	14	20	1"	SAE-8	CTCL2506
2.5	10	1-1/2"	18	28	1"	SAE-8	CTCL2510
2.5	16	1-1/2"	24	40	1"	SAE-8	CTCL2516
2.5	18	1-1/2"	26	44	1"	SAE-8	CTCL2518
3	16	1-1/2"	24	40	1"	SAE-8	CTCL3016

## Hydraulic Cylinder Stroke Reducer Blocks

**Stroke Reducers:** Shorten the stroke length of your cylinder to save time when the full stroke is not needed. Aluminum with finger tabs. *Great for log splitters when splitting short logs.*



Description	Shaft Diameters	Segment Lengths	Weight	SKU
4 Piece Reducer, 4.5" Total	1-1/8", 1-1/4", 1-3/8", 1-1/2"	3/4", 1", 1-1/4", 1-1/2"	1.9 lbs	STRD118112
4 Piece Reducer, 8.75" Total	1-3/4", 2"	1", 1-1/2", 2", 4.25"	4.6 lbs	STRD134200

# Log Splitter Cylinders



**Pin Holes: 1-1/8"**  
**Inside Spacing: 7/8"**



**HYDC040**



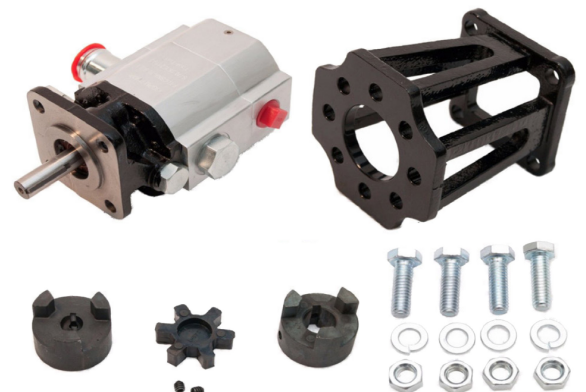
**HYDCM45**

These log splitter cylinders are OEM quality. All have a 9/16" hole on the ram end to secure wedge. Custom configurations in bulk are available on request.

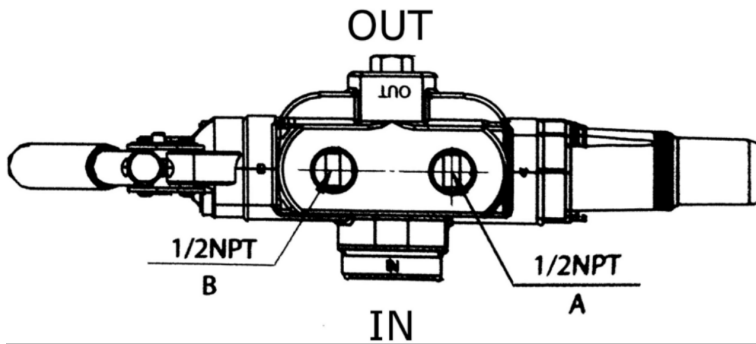
Description	Ports	Bore Diameter	Rod Diameter	Weight	SKU
Clevis Mount Cylinder 24" Stroke, 3500 psi Clevis holes: 1-1/8" Clevis inside spacing: 7/8"	1/2" NPT Female	4"	1.75"	58	HYDC040
		4.5"	1.75"	60	HYDC045
		5"	2"	70	HYDC050
MTD Trunnion Mount Cylinder 24" Stroke, 3500 psi Fits MTD, Troy Built, Cub Cadet, Bolens Trunnion Mount	SAE-8 ORB Female; JIC-8 Male	4.5"	1.75"	60	HYDCM45
MTD Trunnion Mount w/Flange 24" Stroke, 3500 psi Older style w/ valve bracket	SAE-8 ORB Female; SAE-8 ORFS	4"	1.75"	54	HYDCM40F
		4.5"	1.75"	60	HYDCM45F
MTD Clevis Mount Cylinder 24" Stroke, 3500 psi	1/2" NPT Male JIC-8 Male	4"	1.75"	54	HYDCM40F
		4.5"	1.75"	60	HYDCM45F

## Log Splitter Build Kits

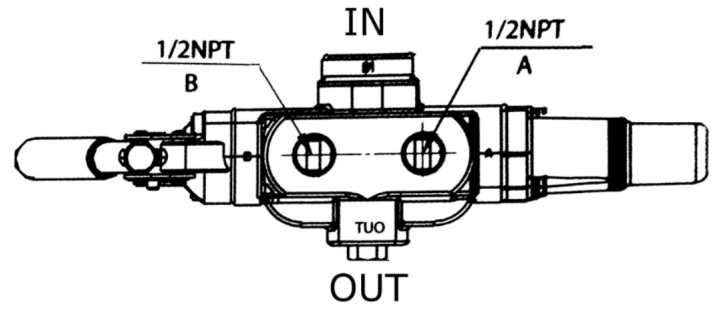
We offer build kits that include any combination of cylinder, valve, pump, mounting hardware, and even engines that we pair with the flow rate and tonnage needs of the kit. *Contact us for details!*



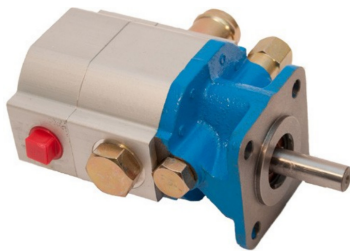
# Log Splitter Pumps & Valves



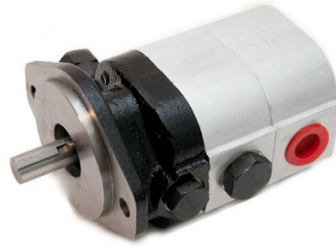
**"A" Flow Direction**



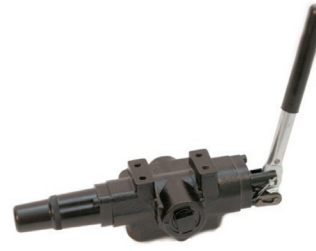
**"C" Flow Direction**



**LSPM011**



**LSPM022**



**LSVLA7**



**LSVL401**

Description	Attachment	Options	SKU
6.5 - 10 HP 2 Stage Hi-Lo Gear Pump, 4 Bolt Aluminum body pump with high volume, low pressure stage (<650psi) and a low volume high pressure stage. At higher pressures (650-3000psi) only the low volume stage runs. Has check valve and relief valve. Great for log splitters, presses, high pressure machine tools. Options cover 5-15 HP motors.	Shaft: 1/2" w/ flat key Inlet: 1" w/ barb Outlet: 1/2" F NPT Mount: 4 bolt, 2" square	11 (8.8/1.6) gpm 11 (8.8/2.1) gpm 13 (10.9/2.1) gpm 16 (13/3) gpm 19 (16.5/3.5) gpm @3600rpm 650/3000psi	LSPMM11 LSPM011 LSPM013 LSPM016 LSPM019
11+ HP 2 Stage Hi-Lo Gear Pump, 2 Bolt Aluminum body pump with high volume, low pressure stage (<650 psi) and a low volume high pressure stage. At higher pressures(650-3000psi) only the low volume stage runs. Great for log splitters, presses, high pressure machine tools.	Shaft: 5/8" w/ flat key Inlet: 1" F NPT Outlet: 3/4" F NPT Female Mount: SAE-A 2 bolt, 4.19" apart	22 (16/7) gpm 28 (22/7) gpm @ 3600rpm 650/3000psi	LSPM022 LSPM028
Log Splitter Valve, Adjustable Detent Log splitter valve with adjustable detent, keeping the valve in retract position until retraction is complete, preset to return to neutral at 1000 psi. 25 gpm maximum flow rate, 3000 psi working pressure.	Cylinder Ports: 1/2" NPT  Pump in & tank return ports: 3/4" NPT	A Flow Direction C Flow Direction	LSVLA7 LSVLC5
Handle Mounting Bracket, Log Splitter Valve Handle mounting bracket to fits our valves and many others used on SpeeCo, Huskee, Brave, MTD, Northern and more.	2" mounting hole distance 0.9" center hole	Standard MTD Style	LSVL401 LSVL402



# Pump Mounts & Couplers



**LSPM301**



**LSPM302**



**LSPM303**



**LO 90 Set**

Pump Mount Description	Mounting & Couplers	SKU
11-13 GPM Pump Mount For 5-7 HP motors. Ideal for 20-25 ton log splitters.	Engine: 4 Bolt, 2.5" Square Pattern Pump: 8 Bolt, 2-3/4" Circular (2" Squares) Use with LO75 couplers	LSPM301
16 GPM Pump Mount, 5.25" Length For 8-15 HP motors. Ideal for 27-35 ton log splitters. Works on Deli, MTD, Halidex and others' pumps. Mounts to Briggs, Honda, Kohler, Subaru motors.	Engine: 4 Bolt, 3.5" Square Pattern Pump: 4 Bolt, 2" Square Pattern Holes for 5/16" bolt Use with LO90, couplers	LSPM302
22-28 GPM Pump Mount, 5.5" Length For 15 HP and greater motors. Ideal for 40 ton and greater log splitters.	Engine: 4 Bolt, 3.5" Square Pattern Pump: 2 Bolt, SAE-A 4.19" Pattern Use with LO99 or LO100 couplers.	LSPM303

**3-Jaw Lovejoy Couplers** provide a dampened coupling from the motor to the pump. Each half is listed, these halves are connected by a rubber "spider", which provides damping to protect the pump from impulses from the motor.

Inner Diameter	LO75 - 1.75" OD	LO90 - 2.11" OD	LO99 - 2.54" OD	LO100 - 2.54" OD	LO110 - 3.31" OD
3/8"	75LJ38	-	-	-	-
7/16"	75LJ716	-	-	-	-
1/2"	75LJ12	90LJ12	-	-	-
9/16"	75LJ916	-	-	-	-
5/8"	75LJ58	90LJ58	-	-	-
3/4"	75LJ34	90LJ34	99LJ34	100LJ34	110LJ34
7/8"	75LJ78	90LJ78	99LJ78	100LJ78	110LJ78
1"	-	90LJ1	99LJ1	-	110LJ1
1-1/8"	-	90LJ118	99LJ118	100LJ118	110LJ118
1-3/16"	-	-	-	100LJ1316	-
1-3/8"	-	-	-	100LJ138	110LJ138
1-1/2"	-	-	99LJ112	-	110LJ112
1-5/8"	-	-	-	-	110LJ158

# Hydraulic Filters



**Great for log splitters!**



Use	Filter	Base	SKU
Tank Return Filter & Base Assembly Cellulose media	10 Micron 1"-12 UN Spin on 3.8" OD, 5.8" Tall 250 psi max pressure	25 psi bypass valve 3/4" NPT in/out	LSFL010

# Log Splitter & Trailer Wheels



Wheel	Mounting	Specs	SKU
4.80-8 DOT (pictured left) Includes dust cover & bearings For MTD, Troy Built, Cub Cadet	3/4" Bearing Single lug on spindle	16" Tire, 4 Ply 390 lbs per wheel	
4.80-8 DOT Includes hub cap & bearings For Speeco, Brave Huskee and many others	1" Bearing Single lug on spindle	16" Tire, 4 Ply 390 lbs per wheel	TIRE4808
Weld on Spindles (pictured right)	1" Diameter 4-1/8" Flat to Fla	Includes castle nut and cotter pin	TIRE4000

# Trailer Jacks



**1000 lb  
Wheeled**



**Flanged  
Side Wind**



**Tubular  
Top Wind**



**Tubular  
Side Wind**

We offer a full line of trailer jacks that cover a wide range of applications. Durable, time proven construction is combined with comfortable handles and appealing style.

Lift Capacity	Lift Height	Mount	Wind	Base	Static Capacity	Weight (lbs)	SKU
1000	10"	Flange	Side	Wheel	1000	15	JAK1FWS
2000	10"	Flange	Side	Plate	3000	17	JAK2F10S
2000	10"	Tubular	Top	Plate	3000	14.1	JAK2T10T
2000	10"	Tubular	Side	Plate	3000	14.0	JAK2T10S
2000	15"	Tubular	Top	Plate	3000	19.1	JAK2T15T
5000	15"	Tubular	Top	Plate	7000	19.8	JAK5T15T



Container Direct Only:  
12000 lb Square Jacks  
Contact for details.



# Hand Held Earth Augers



**One Person Design**



**Two Person Design**

Our hand held power heads are ideal for installing fence posts, planting trees, installing vertical beams for decks and can be used for ice fishing. EPA certified 2-stroke motors provide high power to weight ratio. A centrifugal clutch provides smooth engagement. Auger bits allow digging to 3 feet deep and have a pilot bit to help start the hole. All augers come with a hardware kit and manual.

Digger Power Heads	Operation	Power	Weight	SKU
43 cc Digger	One person	1.7 HP	19	AUGH143
52 cc Digger	One person	2.3 HP	20	AUGH152
63 cc Digger	One person	3.0 HP	23	AUGH1631
63 cc Digger	Two person	3.0 HP	23	AUGH1632

Augers Bits	Shaft	Length	Weight	SKU
4" (10 cm)	3/4" Shaft, 3/8" pin	29.2"	5.2	AUGH010
6" (15 cm)	3/4" Shaft, 3/8" pin	29.2"	6.0	AUGH015
8" (20 cm) **	3/4" Shaft, 3/8" pin	29.2"	8.4	AUGH020
10" (25 cm) **	3/4" Shaft, 3/8" pin	29.2"	10.8	AUGH025
12" (30 cm)	3/4" Shaft, 3/8" pin	29.2"	11.0	AUGH030

\*\* Available as Ice Auger



**43cc w/ 8" Auger Combo Box  
plus 8" Anti-Shock Spring  
&  
7" Extension  
SKU: AUGH148A8PKG**

# Gate & Fence Hardware



# Gate & Fence Hardware



Item	Description	Weight (lbs)	SKU
	A pair of gate hinges (upper & lower) for round- tube gates with tube diameters of 1-5/8" to 1-3/4". The kit includes 5/8" x 6" wood bolts to be mounted in a wood post and mounting hardware.	2.3	GTHN001
	A pair of gate hinges (upper & lower) for round- tube gates with 2" tube diameter. Kit includes 3/4" x 12" mounting bolts to be mounted in a wood bolt and mounting hardware.	5.6	GTHN002
	For round-tube gates of 1-5/8" to 2" diameter, allowing the gate to open one way. Mounts on wood post and accepts pad lock.	3.1	GTLT001
	A gate latch designed for round-tube gates of 1-5/8" to 2" diameters. Allows the gate to open either direction. Mounts on wood post and accepts a padlock.	4.9	GTLT002
	Lockable two-way gate latch designed for round- tube gates of 1-1/4" to 1-1/2" diameter. Allows gate to open either direction, mounts on round tube and is padlock compatible.	4.8	GTLT003
	Makes turning off-road equipment a breeze. Split base design makes mounting easy. Use on steering wheels up to 1-1/4" thick.	0.7	TRAC001
	Manually operated 17 lb steel post pounder.	17	POPU017
	Gate closer fits posts up to 5" diameter and accepts a padlock. Powder coated and corrosion resistant.	5.0	GTLT201
	Gate wheel designed for round tube gates of 1-5/8" to 2" diameters. Allows the gate to open and close easily while preventing the gate from sagging.	4.5	GTWL001
	Tall gate wheel adjusts height up to 6.5" for gates with high ground clearance. Allows gate to open and close easily while preventing the gate from sagging. Fits round tube gates of 1-5/8" to 2" diameters.	8.9	GTWL002
	Use a gate anchor to hold a livestock gate open at any position, preventing swinging and sagging. Fits round tube gates of 1-3/4" to 2" diameters.	4.0	GTWL003
	A post puller designed to easily remove studded "T" type posts from the ground with one person operation, allowing reuse of posts. Can also be used with a hook to be used for other post types.	17.0	PSPL001
	This wire gripper holds barbed wire, smooth wire and small cable in place while doing maintenance.	0.9	WIRE001
	Safely and efficiently carry and unroll barbed wire rolls. Spins free and accepts 1/2" pipe for use with a partner or mounting on vehicle.		WIRE002
	For stretching, tightening, splicing multiple wire types including barbed, high tensile and smooth wire.	8.3	WIRE101
	Wire stretcher with ratchet control, allowing a controlled release of wire tension.	8.6	WIRE102







**AgKNX**  
**15000WEST 44TH AVE STE B GOLDEN**  
**CO80403**

agknx.com

sales@agknx.com

303-278-0664

Golden, CO

**PRODUCT**  
**CATALOG**