



MAKE THE WORLD BETTER

**PRODUCT
CATALOG**



YOUR POWER EQUIPMENT PARTNER

About Us

- POWERKNX is committed to bringing attractive creative products and high-quality services with innovative technology and competitive prices to customers across the globe. Quality is the foundation of POWERKNX and innovation fuels our growth and sustainable development.
- Behind the POWERKNX brand is over 30 years of expertise in manufacturing agricultural machinery and outdoor power equipment. Our company brings together established U.S. design and engineering with incomparable overseas manufacturing experience supplying quality products for decades. POWERKNX stands for a sincere pursuit of integrity, dedication, innovation and stability.

 **POWERKNX**

RanchEx

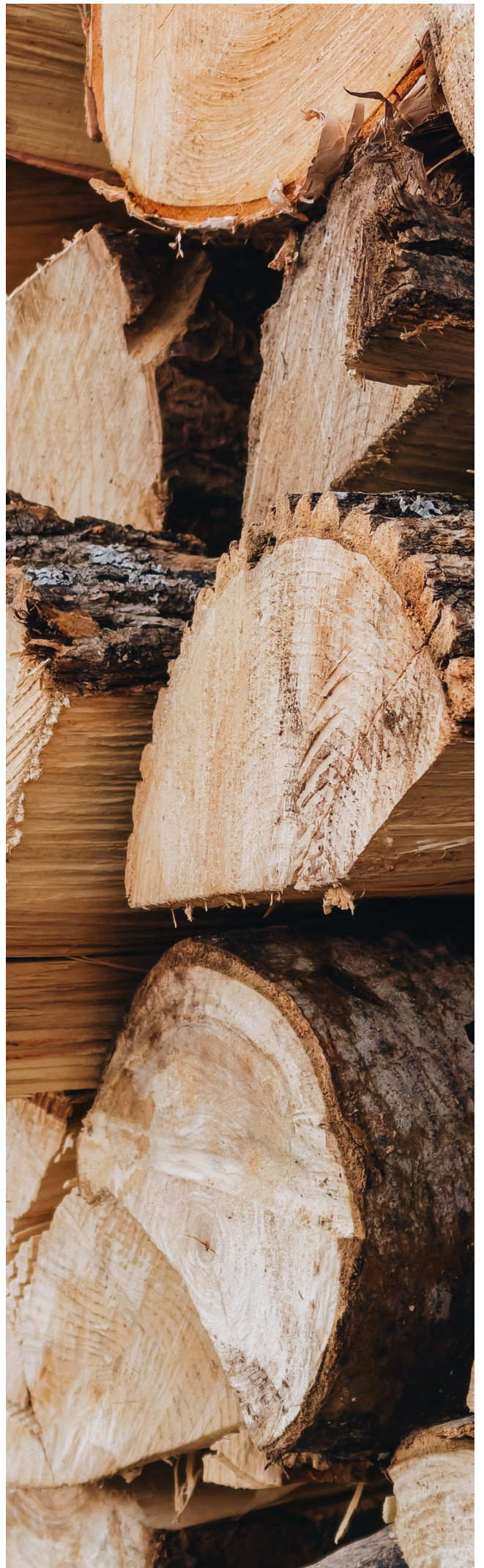


TABLE OF CONTENTS

- **LOG SPLITTER** 4-10
- **POST HOLE DIGGERS** 11
- **TILLERS** 12
- **CHIPPER SHREDDER** 13
- **TRIMMERS** 14
- **LOG BRUSH MOWER** 15
- **HYDRAULIC ROD CYLINDER** 16
- **ENGINE INTRODUCTION** 17
- **WARRANTY** 18

POWDER BY



22-TON HALF BEAM LOG SPLITTER

KOHLER®



FEATURE

- 22 Ton splitter force
- 6.5 HP ENGINE
- Adjustable detent valve
- Built-in log cradle
- Log catcher included
- High-speed road

POWERKNX

SKU/Part#	Description	Specification	
	22-Ton Half-Beam Horizontal/Vertical Log Splitter	Beam	T footplate
	Maximum Splitting Force	22 tons*	Valve
			Auto return with adjustable detent
	Engine	6.5 HP 196cc, Kohler SH265, EPA/CARB approve	Wheels
			D.O.T. approved 16" O.D. road tires
	Maximum Log Length	25"	Coupler
			2" ball with safety chains
	Cycle Time	10.9 seconds, down and back*	Replacement Filters
	Cylinder	4" diameter x 24" stroke	
			Suction Screen
	Pump	Two stage 13 gallons/minute	40' HQ Qty
			100
	Hydraulic Capacity	5.6 gallons max. system, 4 gallons operational	Shipping Weight
			440 Lbs. w/o fluids
	Wedge	8" highheat-treated steel	Warranty
			3 Year / 1 Year Limited Warranty

25-TON LOG SPLITTER

KOHLER®



FEATURE

- 22 Ton splitter force
- 6.5 HP Kohler engine
- Adjustable detent valve
- Built-in log cradle
- High-speed road tires
- Log catcher included



SKU/Part#	Description	Specification	
	22-Ton Half-Beam Horizontal/Vertical Log Splitter	Beam	8" footplate
	Maximum Splitting Force	25 tons*	Valve Auto return with adjustable detent
	Engine	6.5 HP 196cc, Kohler SH265, EPA/CARB approved	Wheels D.O.T. approved 16" O.D. road tires
	Maximum Log Length	25"	Coupler 2" ball with safety chains
	Cycle Time	11.2 seconds, down and back*	Replacement Filters Return Filter Suction Screen
	Cylinder	4" diameter x 24" stroke	
	Pump	Two stage 15 gallons/minute	40' HQ Qty 80
	Hydraulic Capacity	6.5 gallons max. system, 4 gallons operational	Shipping Weight 510 lbs. without fluids, 643 lbs. with fluids
	Wedge	8" highheat-treated steel	Warranty 3 Year / 2 Year / 1 Year Limited Warranty

25-TON LOG SPLITTER



FEATURE

- 25 Ton splitter force
- 6.5 HP Kohler engine
- Adjustable detent valve
- Built-in log cradle
- High-speed road tires
- Log catcher included



SKU/Part#	Description	Specification		
	25-Ton Horizontal/Vertical Log Splitter	Beam	8" footplate	
	Maximum Splitting Force	25 tons*	Valve	Auto return with adjustable detent
	Engine	6.5 HP 208cc, Briggs,EPA/CARB approved	Wheels	D.O.T. approved 16" O.D. road tires
	Maximum Log Length	25"	Coupler	2" ball with safety chains
	Cycle Time	9.4 seconds, down and back*	Replacement Filters	Return Filter
	Cylinder	4" diameterx24"stroke		Suction Screen
	Pump	Two stage 15 gallons/minute	40' HQ Qty	80
	Hydraulic Capacity	6.5 gallons max. system, 4gallons operational	Shipping Weight	510 lbs. without fluids, 643 lbs. with fluids
	Wedge	8" highheat-treatedsteel	Warranty	3 Year / 2 Year / 1 Year Limited Warranty

30-TON LOG SPLITTER

KOHLER®

RATO
PROFESSIONAL POWER PRODUCTS



FEATURE

- 30 Ton splitter force
- 7 HP Rato engine
- Adjustable detent valve
- Built-in log cradle
- High-speed road tires
- Log catcher included

POWERKNX

SKU/Part#	Description	Specification
	30-Ton Horizontal/Vertical Log Splitter	Beam 8" footplate
	Maximum Splitting Force	30 tons* Valve Auto return with adjustable detent
	Engine	7 HP 212cc,Rato R210, EPA/CARB approved Wheels D.O.T. approved 16" O.D. road tires
	Maximum Log Length	25" Coupler Casting coupling with safety chains
	Cycle Time	13.3 seconds, down and back* Accessories 4-Way Wedge, Large Log Table
	Cylinder	4.5" diameterx24"stroke Replacement Filters Return Filter
	Pump	Two stage 15 gallons/minute Suction Screen
	Hydraulic Capacity	6.5 gallons max. system, 4gallons operational Shipping Weight 520 lbs. without fluids, 614 lbs. with fluids
	Wedge	8" highheat-treatedsteel Warranty 3 Year / 2 Year / 1 Year Limited Warranty

35-TON LOG SPLITTER

KOHLER®

RATO™
PROFESSIONAL POWER PRODUCTS



FEATURE

- 35 Ton splitter force
- 9.5 HP Kohler engine
- Adjustable detent valve
- Built-in log cradle
- High-speed road tires
- Log catcher included

POWERKNX

SKU/Part#	Description	Specification
	35-Ton Horizontal/Vertical Log Splitter	Beam 8" footplate
	Maximum Splitting Force	35 tons* Valve Auto return with adjustable detent
	Engine	9.5 HP 277cc, Kohler, EPA/CARB approved Wheels D.O.T. approved 16" O.D. road tires
	Maximum Log Length	25" Coupler Casting coupling with safety chains
	Cycle Time	13.3 seconds, down and back* Accessories 4-Way Wedge, Large Log Table
	Cylinder	4.5" diameter x 24" stroke Replacement Filters Return Filter
	Pump	Two stage 15 gallons/minute Suction Screen
	Hydraulic Capacity	8 gallons max. system, 6.5 gallons operational Shipping Weight 550 lbs. without fluids, 644 lbs. with fluids
	Wedge	8" highheat-treated steel Warranty 3 Year / 2 Year / 1 Year Limited Warranty

40-TON LOG SPLITTER



FEATURE

- 40 Ton splitter force
- 14 HP Rato engine
- Jockey wheel
- Adjustable detent valve
- Built-in log cradle
- High-speed road tires
- Double Log catcher included



SKU/Part#	Description	Specification
	40-Ton Horizontal/Vertical Log Splitter	Beam 9" footplate
	Maximum Splitting Force	40 tons* Valve Auto return with adjustable detent
	Engine	14 HP 420cc, Rato, EPA/CARB approved Wheels D.O.T. approved 16" O.D. road tires
	Maximum Log Length	25" Coupler Casting coupling with safety chains
	Cycle Time	8.8 seconds down 7.3 seconds back* 40' HQ Qty 60
	Cylinder	5" diameterx24"stroke Replacement Filters Return Filter
	Pump	Two stage 19.5 gallons/minute Suction Screen
	Hydraulic Capacity	8 gallons max. system, 6.5 gallons operational Shipping Weight 594 lbs. without fluids, 628 lbs. with fluids
	Wedge	9" highheat-treatedsteel Warranty 3 Year / 1 Year Limited Warranty

3-POINT LOG SPLITTER



FEATURE

- 15-25 ton splitting force
- Vertical or horizontal operation
- Connects to tractor hydraulic



SKU/Part# Description	Specification		
Horizontal/Vertical Log Splitter			
Tractor Categories	CAT1 and CAT2	Wedge	9" highheat-treated steel
HITCH	Tractor 3- point	Beam	8" footplate
Maximum Splitting Force	15 to 25 tons *	Valve	Auto return with adjustable detent
Maximum Log Length	25"	Accessories	4-Way Wedge, Large Log Table
Cycle Time	9 to 15.4 seconds	Dimensions	72" L x 22" W x 42" H (72" vertical)
Cylinder	4" diameter x 24" stroke	Warranty	3 Year / 2 Year / 1 Year Limited Warranty

POST HOLE DIGGER



Post hole digger systems include a boom, A-frame, gear box, PTO driverline with safety shields, manual canister, all necessary pins and hardware kits. All models have an adjustable boom/A-frame connection. Diggers come in individual crate, which can fit one auger up to 9" and 12" depending on the model and crate ordered.

Model 400

Post Hole Digger for compact, Category 0&1 tractors. 6", 9" and 12" augers available.

Model 650

Post Hole Digger for Category 1 tractor. 6", 9" and 12" augers available.

Model 1000

Post Hole Digger for Category 1 tractor. 6", 9", 12", 18" and 24" augers available.

Model 1500

Post Hole Digger for Category 1&2 tractors. 6", 9", 12", 18" and 24" augers available.



Model	Category	Rating	Boom Length	Auger Diameters	Weight
400	0&1	Compact	56"	6", 9", 12"	150lbs
650	1	Standard Duty	60"	6", 9", 12"	160lbs
1000	1	Heavy Duty	72"	6", 9", 12", 18", 24"	200lbs
1500	1&2	Extra Heavy Duty	72"	6", 9", 12", 18", 24"	235lbs

FRONT TINE TILLER



FEATURE

- 15" tilling widths
- 10" tilling depth
- Powerful 149cc engine
- Driver safety control lever
- Handlebars fold for storage
- Adjustable depth



SKU/Part# Description	Specification
15 Inch Front Tine	
Engine	196cc*RH265,EPA/CARB Approved
Engine Oil Capacity**	0.6 quarts
Tine Speed	240 rpm
Tilling Width	15"
Tilling Depth	10"
Tires	6" diameter
Transmission	Neutral/forward
Dimensions	48"Lx21"Wx42"H
Shipping Weight	70 lbs.
Warranty	2 Year Limited

3 INCH CHIPPER/SHREDDER

FEATURE

- 196 cc Kohler engine
- 3 in. chipper capacity
- Hardened steel chipper knives, flails and hammers
- 20:1 reduction ratio
- Large 14" wheels
- Tow hitch included
- Heavy-duty steel frame
- 3 bushel collection bag included



POWERKNOX

SKU/Part# Description	Specification
3" Chipper/Shredder	
Engine	Kohler RH265,6.5 HP, 196cc*
Starting System	Manual, recoil
Chipping Capacity	3" diameter
Shredding Capacity	1/2"
Hopper Size	20" x 19" x T
Wheel Size	14" diameter x2J, width
Debris Collection	3 bushel capacity, detachable bag
Debris Bag Size	42" Lx 24" H
Discharge	Chute adjustable, 4 positions
Frame	10 gauge steel
Dimensions	34"Lx24"Wx42.5"H
Weight(lbs).	220
Warranty	2 Year/ 2 Year limited Warranty

SPRING TRIMMER



FEATURE

- 22 inch cutting width
- 3 in. chipper capacity
- Maintenance free trimmer head
- 149cc/163cc engine options
- Large 14 inch diameter wheels
- Tow hitch included
- Unique patented trim ball
- Resists string pull out

POWERKNX

SKU/Part# Description	Specification
High Wheel String Trimmer	149cc* Kohler XT675, EPA/CARB approved
High wheel String Trimmer	163cc* Briggs & Stratton, EPA/CARB approved
Engine Speed	3600 rpm
Cutting Width	22 inches
Cutting Height	5 heights 1.5-3.5"
Cutting Speed	3800 rpm
Cutting Line Size	Orange.157wdia. (4mm) x 19" length
Wheel Size	14" x 1.75" width
Frame	14 gauge steel
Trim Ball	4" dia. with 4" heat treated cutting blades
Drive Belt	V-Belt, 3L440
Dimensions	50.4" Lx 21.5" Wx 38.4" H
Shipping Weight	67 lbs.
Accessories	Tree Guard, Replacement Blades, Replacement String
Warranty	2 Year/ 2 Year Limited Warranty

TOW BEHIND MOWER



POWERKNX

FEATURE

- 46" cutting width
- Chain debris guards front and back
- Adjustable cutting height
- Breakaway blades
- Push and pull bars
- Puncture resistant tires with latex sealant

SKU/Part#			
Description	Brush Mower,Tow Mower	Blades	
Starting	Electric start	Blade Speed	9" highheat-treated steel
Engine	19HP, 597cc Kohler SV 591 EPA/ CARB approved	Wheels	8" footplate
Dimensions	64"W*110"L*28"H	Remote Controls	Auto return with adjustable detent
Cutting Width	46"	Fuel Tank Capacity	4-Way Wedge, Large Log Table
Cutting Height	Adjustable, 4.5", 5.75", 7", or 8"	Shipping Weight	72" L x 22" W x 42" H (72" vertical)
Cutting Capacity	4 feet grass height, up to 1.5" thick saplings	Warranty	3 Year / 2 Year / 1 Year Limited Warranty

TOW BEHIND MOWER



Description	Ports	Bore Diameter	Rod Diameter	Weight(lbs)
Clevis Mount Cylinder	1/2"NPT	4"	1.75"	58
24" Stroke,3500psi	Femal	4.5"	1.75"	60
Clevis Holes:1-1/8"		5"	2"	70
Clevis inside spacing:7/8"				

Log splitter Build Kits

We offer build kits that include any combination of cylinder, valve, pump, mounting hardware.



GASOLINE OHV ENGINES



These high quality engines start easily even in cold wether and run reliably. All eninges are EPA certified and come with a manual in a padded box.

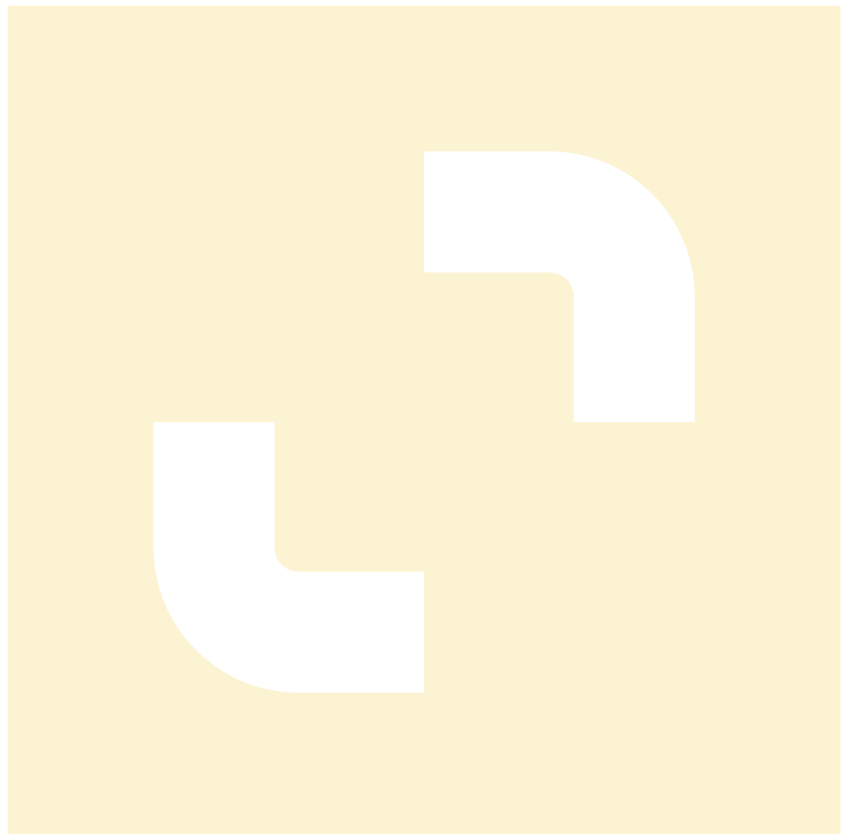


Brand	Engine Size	Horse Power	Torqure (ft-lb)	Shaft Diameter	Starter
Kohler	196cc	6.5HP		3/4"	Recoil
Briggs	306CC	10HP		3/4"	Recoil
Kohler	277cc	9.5HP		3.5"	Recoil
Rato	212cc	7HP	12.2	3/4"	Recoil
Rato	420cc	14HP	19.5	3.5"	Recoil

WARRANTY

POWERKNX offers two or three years warranty(Depending upon product),three years warranty on gas powered engines ,two years warrant on metal parts and 1 year warranty on hydraulic components.

Warranty does not cover misuse,neglect,normal wear,improper maintenance,overload beyond rated capacity,accidents,cosmetic defects,consumables such as spark plugs,-filter,o-rings,etc.





**POWERKNX
Golden Colorado**

Changzhou Inter Universal Machinery & Equipment Co., Ltd
Changzhou, Jiangsu China

Please feel free to contact us:

Call: 303-278-0664

www.tooltuffdirect.com | sales@tooltuffdirect.com | 720-213-4383