



## Model 650 & Model 1000 Post Hole Diggers



# OWNER'S MANUAL

## ASSEMBLY & OPERATING INSTRUCTIONS



**READ ALL IMPORTANT SAFETY MESSAGES IDENTIFIED BY THIS MARK. DISREGARDING THESE WARNING CAN RESULT IN SERIOUS INJURY OR DEATH.**

# Table of Contents

	Page(s)
Important Safety Information .....	1-4
Intended Use .....	1
Personal Protective Equipment .....	1
Safety Decals .....	1-3
General Safety and Preparation.....	3
Operating Safety .....	3-4
Repair and Maintenance Safety.....	4
Assembly Instructions .....	5
General Maintenance .....	6
Operating Instructions .....	6
Parts List .....	7
Parts Breakdown Illustration .....	8
Cutting Edges and Point Parts List .....	9
Gear Box Parts List.....	10
Notes .....	11
Specifications .....	Back Cover
Ordering Information .....	Back Cover



# IMPORTANT SAFETY INFORMATION



**WARNING:** Understand all instructions and safety information before assembling or operating this post hole digger. Failure to do so may cause serious injury or death. Do not allow anyone to operate this post hole digger who has not read this manual. As with all power equipment a post hole digger can be dangerous if assembled or used improperly. Do not operate this post hole digger if you have doubts or questions concerning safe operation. Contact our customer service department at [info@tooltuffdirect.com](mailto:info@tooltuffdirect.com) to address these concerns.

## INTENDED USE

This product is designed to dig holes in the soil when attached to the 3-point linkage system and power-take-off of a tractor.

It is **not** intended for any other use. Using the product for anything other than digging holes could result in serious injury or death.

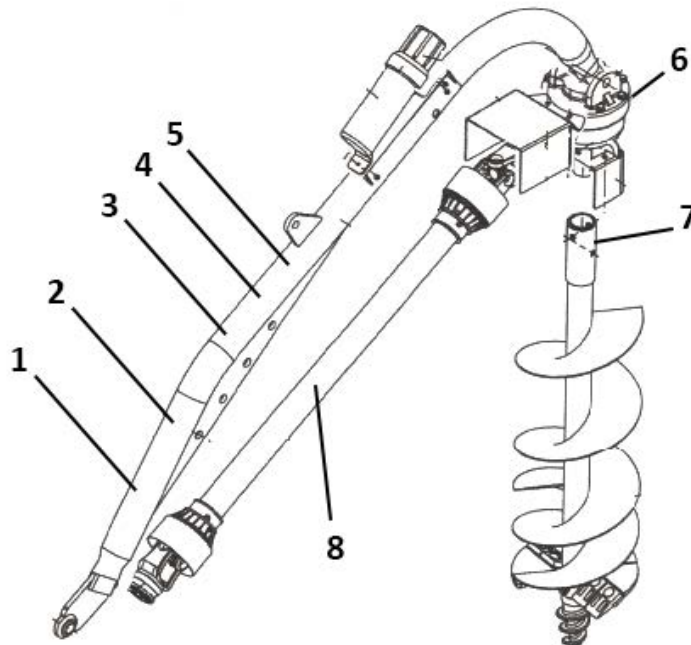
## PERSONAL PROTECTIVE EQUIPMENT



**ALWAYS** use appropriate personal protective equipment such as protective eyewear, earware, gloves, safety shoes and hard hat when operating this post hole digger.

**NEVER** wear loose clothing or jewelry that could become entangled in the auger or driveline.

## SAFETY DECALS



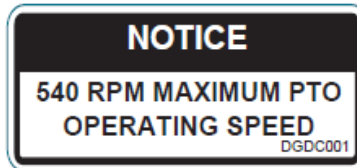
Note:  
Not a decal. Model 1000 Shown. Decal locations are same on Model 650.

Find the decals shown on the next pages and ensure your digger has them. Read and understand the warnings on the decals.

**ALWAYS** replace missing or defaced decals. Reorder from AgKNX, 15000 W. 44th Ave., Ste B, Golden, CO 80403, call 1-720-437-7640, or send a message to info@tooltuffdirect.com



DGDC002  
4.5 w x 1.5 h



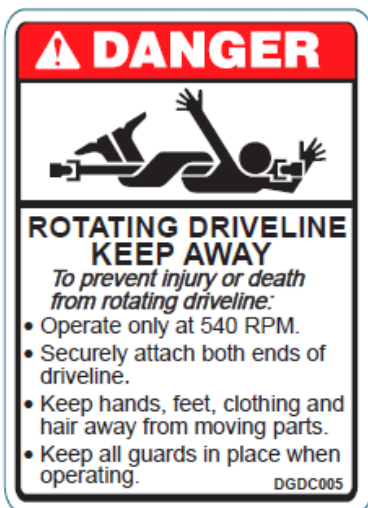
DGDC001  
2.7 w x 1.25 H



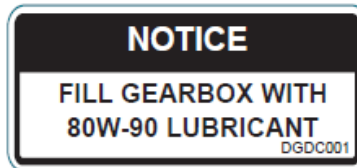
DGDC003  
2.75 w x 3.5 h



DGDC004  
2.75 w x 3.5 h



DGDC005  
2.75 w x 3.75 h



DGDC006  
2.7 w x 1.25 H

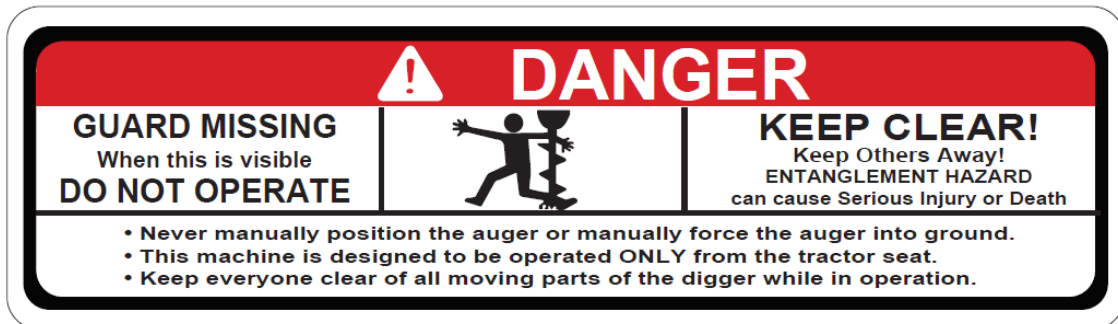


6 piece safety decal sheet  
AgKNX Post Hole Diggers  
ToolTuff Direct LLC  
15000 W 44th Ave, Ste B  
Golden CO 80403  
720-437-7640

LOCATION: PTO DRIVE SHAFT  
PART NUMBER: DGDC008



# IMPORTANT SAFETY INFORMATION



LOCATION: TOP END OF AUGER TUBE  
PART NUMBER: DGDC007

**NOTE: IF THE OUTPUT SHAFT GUARD MENTIONED IN THE ABOVE DECAL IS MISSING, ORDER A REPLACEMENT BY CONTACT US AT 720-437-7640 OR [INFO@TOOLTUFFDIRECT.COM](mailto:INFO@TOOLTUFFDIRECT.COM)**

## GENERAL SAFETY AND PREPARATION

**ALWAYS** make sure that anyone else who operates this post hole digger has read and understood the contents of the owner's manual and all safety decals on the product.

**ALWAYS** be certain that all members of the work party are familiar with the operation of the digger and the hazards associated with it.

**ALWAYS** check with authorities for underground utilities before digging a hole. Serious injury or death could result from contact with gas or electric lines.

**ALWAYS** check the tractor owner's manual for instructions on operation, attachment of 3-point equipment and safety.

**ALWAYS** make sure that all safety shields are in place and tightened down. Do not operate this post hole digger if any shields are missing. Contact AgKNX at 720-437-7640 or [info@tooltuffdirect.com](mailto:info@tooltuffdirect.com) for replacement part(s).

**ALWAYS** make sure that the auger point and cutting edges are intact and in good working order before using this digger.

**NEVER** allow children or other persons to ride on the Tractor or Implement. Falling off can result in serious injury or death.

**NEVER** allow children to play on or around Tractor or Implement. Children can slip or fall off the Equipment and be injured or killed. Children can cause the Implement to shift or fall crushing themselves or others.

**NEVER** allow others within 20 feet while operating the post hole digger.

**NEVER** operate post hole digger without all guards in place.

**ALWAYS** ensure the driveline is securely locked onto the PTO.



# IMPORTANT SAFETY INFORMATION

## OPERATING SAFETY

**ALWAYS** operate this post hole digger from the tractor seat. Only one person should operate the digger.

**NEVER** attach the post hole digger with the tractor engine running.

**NEVER** operate the post hole digger with anyone near or in contact with any part of the implement, PTO driveline or auger. Serious injury or death could result from entanglement with moving parts.

**ALWAYS** make sure that the tractor brake is set before digging a hole.

**ALWAYS** keep hands, feet and clothing away from power-driven parts during operation.

**NEVER** manually position the auger or manually force the auger into the ground.

**ALWAYS** make sure that the tractor engine is shut off and the PTO drive is disengaged before leaving the tractor seat.

**NEVER** move the tractor with the power-take-off in the ON position.

**NEVER** exceed 540 RPM PTO operating speed.

**NEVER** operate the post hole digger when the auger point is more than 6 in. above ground level. Operating the digger in elevated positions may cause the PTO driveline "U" joints to bind resulting in equipment damage and operator injury.

**ALWAYS** turn off the digger immediately if an immovable object is encountered to prevent damage to the gear box or driveshaft and possible injury. A shear bolt is provided but may become welded to the input shaft if the driveshaft is left running after being sheared.

## TRANSPORTATION SAFETY

**NEVER** allow anyone to ride on Implement.

Make certain the slow moving (SMV) sign and other reflectors are clearly visible. Follow local traffic codes for slow moving vehicles when transporting on public roads.

## REPAIR AND MAINTENANCE SAFETY

**ALWAYS** perform maintenance operations such as lubrication, adjustments or repairs on the post hole digger with the tractor engine off, the PTO drive disengaged and the auger point resting on the ground.

**ALWAYS** use the correct shear bolt (Grade 5). **NEVER** use or replace the shear bolt with one that is longer than the one specified in the manual (5/16" x 2-1/2").

Periodically inspect all moving parts for wear and replace when necessary with authorized service parts. Look for loose fasteners, worn or broken parts, and leaky or loose fittings. Serious injury may occur from not maintaining this machine in good working order.

**Do not modify or alter this Implement. Do not permit another to modify or alter this Implement, any of its components or any Implement function. Any modification will void the warranty.**



## ASSEMBLY INSTRUCTIONS

**IMPORTANT:** The gear box is shipped without lubricant. Fill the top hole with **80W-90** lubricant or the equivalent. Fill until the lube appears at the side level check hole. Approximately two pints or two pounds of the lubricant is enough to lubricate the gears and bearings. A greater amount will not harm the gear box. Do not fill to overflow point as this may damage the seals.

**STEP 1:** Be certain that the gear box has adequate lubrication. Check the oil level after every fifty hours of use.

**STEP 2:** Attach the boom (1) to the top link mounting bracket on the tractor using a top link pin and a lynch pin (not provided) through the hole at the bottom of the boom.

**STEP 3:** Connect the "A" frame (5) to the tractor's 3-point lift arms using the 7/8 in. pull pins with nut and lockwasher (5A) as shown in the drawing. Attach the "A" frame (5) to the boom (1) after selecting the desired hole (for angle adjustment) using the "A" frame pin (6) and lynch pin (4).

**STEP 4:** Attach the gear box (10) to the boom (1) using the boom pin (2). When in place secure with cotter pins (3). NOTE: Input shaft shield (9) and output shaft shield (12) are already attached to the gear box.

**STEP 5:** Attach the auger (20, 21 or 22) to the output shaft on the bottom of the gear box (10) using the 1/2 in. hex cap screws (17), 1/2 in. lockwashers (18) and 1/2 in. hex nuts (19). Tighten the nuts.

**STEP 6:** Attach the driveline (13) to the gear box input shaft using the 5/16 in. grade 5 hex cap screw (14), the 5/16 in. lockwasher (15) and the 5/16 in. NC hex nut (16). Tighten the hex nut. Insert the 1/4 in. x 3/8 in. set screw from the hardware kit in the hole on the yoke that aligns with the 3/16 in. groove on the gear box input shaft. Tighten.

**ATTENTION:** THE 5/16 IN. HEX CAP SCREW PROVIDES SHEAR PROTECTION. USE A GRADE 5 2-1/2" BOLT ONLY TO AVOID DAMAGE TO THE GEAR BOX OR AUGER.

**IMPORTANT:** The universal joint should be greased with a good grade chassis lube every week. At the beginning of each season grease the sliding driveshaft members with a moly grease. All diggers are equipped with quick-detach universal joints on the power-take-off end for a 1-3/8 in. splined shaft.

**STEP 7:** Attach the tractor end of the driveline (13) to the tractor PTO shaft. Push in the spring-loaded pin in the splined yoke (13C) and slip it on the splined PTO shaft of the tractor. Release the pin and push until it locks securely in place. It will be necessary to obtain a 1-1/8 in. to 1-3/8 in. sleeve spline adapter if your tractor PTO shaft has a 1-1/8 in. spline.

**STEP 8:** Attach and secure both chains on the driveline to the boom (1). See illustration A.

**STEP 9:** Check all nuts and bolts for tightness. Stabilizers should be kept tight to avoid side sway of the digger.

**NOTE:** See illustration A for reference in assembling the digger and mounting it to the tractor. Note that the boom angle can be adjusted on your tractor for proper digging and ground clearance by moving the "A" frame to a different mounting hole as shown in illustration B.

**NOTE:** When the 7/8 in. diameter pull pins in the "A" frame are too small for the holes in the lift arms, bushings should be used to obtain a proper fit.



ILLUSTRATION A



ILLUSTRATION B

## OPERATING INSTRUCTIONS



**WARNING:** Read and thoroughly understand all instructions and safety information before operating this post hole digger. Failure to do so may cause serious injury or death. Do not allow anyone to operate this post hole digger who has not read this manual.

**STEP 1:** After mounting the digger to the tractor, lower the auger point slowly to the ground at the desired digging angle before engaging power.

**STEP 2:** Engage the power-take-off and start digging at a slow speed, lowering the auger slowly as it begins to dig.

**STEP 3:** Increase speed as the auger goes deeper. The type of soil will determine the proper auger speed. If the soil is extremely hard, it will generally improve operation to vary the speed of the auger at times.

**STEP 4:** When the auger has reached the desired depth, spin it momentarily at a high speed to clear the hole of dirt. Reduce speed before withdrawing the auger from the hole.

**STEP 5:** Disengage the power-take-off after withdrawing from the hole and move the tractor to the next hole location.

## GENERAL MAINTENANCE

REFER TO ILLUSTRATION C



**WARNING:** Always perform maintenance operations with the tractor engine off, the PTO drive disengaged and the auger point resting on the ground.

1. To remove the auger from the gear box output shaft, take out the two 1/2 in. x 3 in. hex cap screws (17).
2. To remove the driveshaft from the gear box input shaft, take out the shear pin bolt (14) and 1/4 in. set screw (13E).
3. Check the oil level after every fifty hours of use. Use 80W-90 lubricant and fill to oil level plug. All replacement lubricant should be of this type.
4. The universal joints should be greased with a good grade chassis lube every week. At the beginning of each season, grease the sliding driveshaft members with a moly grease.



**MODEL 650 POST HOLE DIGGER PARTS BREAKDOWN**

	DIGT650	Model 650 Post Hole Digger w/o Auger	
			1
1	DIGT002	Boom	1
2	DIGT002P	Boom Pin	1
3	NA	5/32 in. x 1-1/2 in. Cotter Pin	2
4	LKLP044	7/16 in. Lynch Pin	1
5	DIGT003	"A" Frame	1
5A	LKDP101	7/8 in. Pull Pin with Nut and Lockwasher	2
6	DIGT003P	"A" Frame Pin	1
9	DIGT204	Gear Box Input Guard	1
10	DIGT201	Gear Box Assembly	1
10A	DIGT202	Gear Box Bearing & Seal Kit	1
12	DIGT203	Gear Box Output Guard	1
13	PTOLD650	Model 650 Driveline with Plastic Shield	1
13A	PPTOLD650G	Guard Assembly	1
13B	PTOLD650B	Cross and Bearing Kit	2
13C	PTOLD650Y	Push Pin Yoke	1
13D	PTOLD650I	Implement End Yoke	1
13E	NA	1/4" x 3/8" Pointed Set Screw	1
14	NA	5/16 in. x 2-1/2 in. Hex Cap Screw (Grade 5 Shear Bolt)	1
15	NA	5/16 in. Lockwasher	1
16	NA	5/16 in. NC Hex Nut	1
17	NA	1/2 in. NC x 3 in. Hex Cap Screw	2
18	NA	1/2 in. Lockwasher	2
19	NA	1/2 in. NC Hex Nut	2
20	AUGT006	6 in. Auger with Screw Point and Cutting Edges	as required
21	AUGT009	9 in. Auger with Screw Point and Cutting Edges	as required
	AUGT109	9 in. Heavy Duty Auger with Screw Point and Cutting Edges	as required
22	AUGT012	12 in Auger with Screw Point and Cutting Edges	as required
	AUGT112	12 in. Heavy Duty Auger with Screw Point and Cutting Edges	as required

NA- Common fasteners available through local hardware and farm stores.

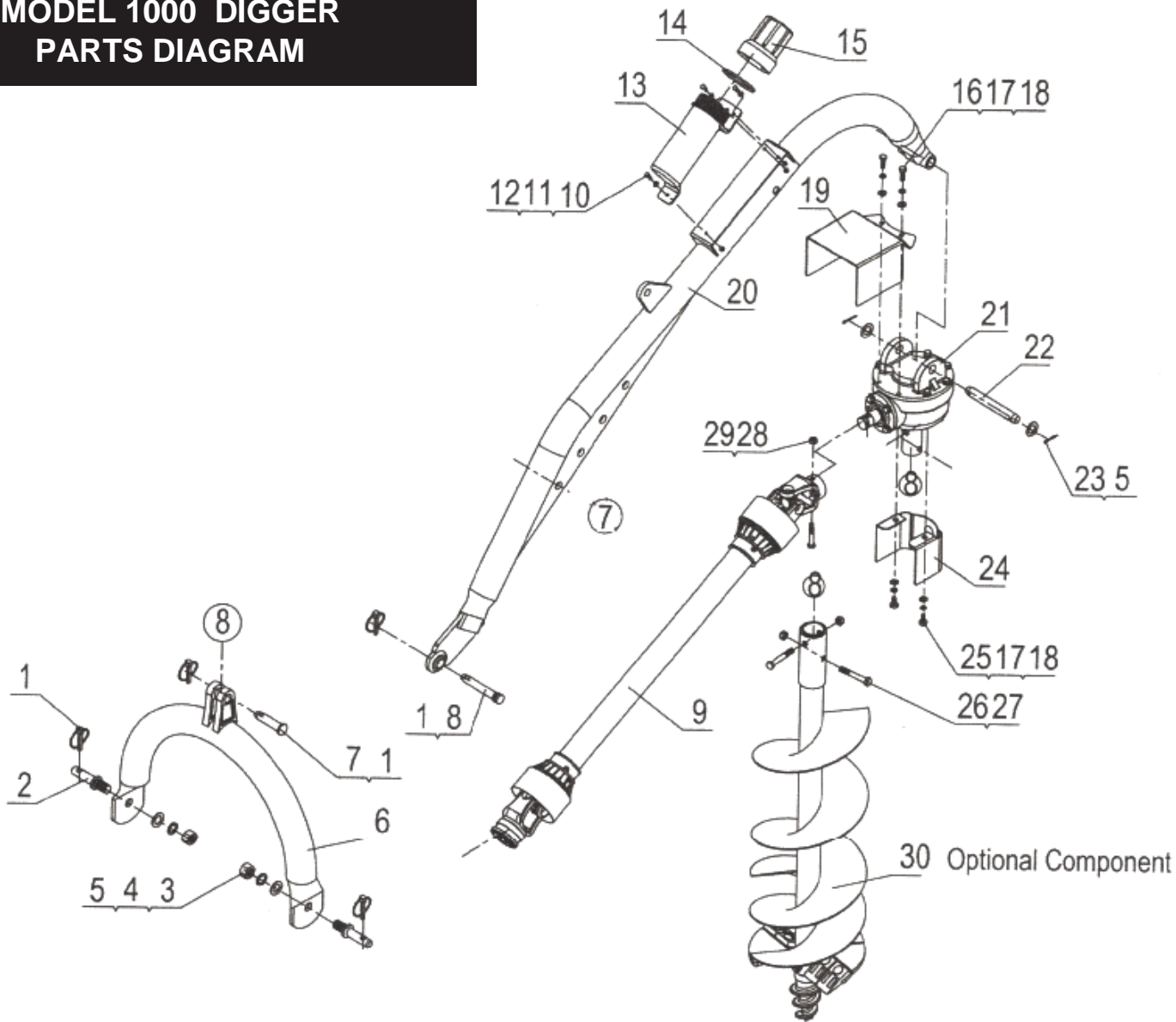


## MODEL 1000 POST HOLE DIGGER PARTS BREAKDOWN

	DIGT1000	Model 1000 Post Hole Digger w/o Auger	1
1	LKLP044	7/16" Linch Pin	4
2	LKDP101	7/8" Pull Pin	2
3	NA	Hex Nut 7/8"-14 UN	1
4	NA	Lock Washer 22mm	2
5	NA	Flat Washer 22mm	4
6	DIGT103	"A" Frame	1
7	LKTP102	"A" Frame Pin	1
9	PTOLD1000	Model 1000 Driveline w/ Plastic Shields	1
10	NA	Hex Bolt 5/16 x 3/4"	3
11	NA	Flat Washer 5/16 (optional)	3
12	NA	Lock Nut 5/16 (welded on bracket)	3
13	DIGT110	Manual Canister	1
14	DIGT111	Rubber Gasket	1
15	DIGT112	Barrelhead	1
16	NA	Hex Bolt M10x30	2
17	NA	Lock Washer 10mm	4
18	NA	Flat Washer 10mm	4
19	DIGT204	Gear Box Input Guard	1
20	DIGT102	Boom	1
21	DIGT201	Gear Box	1
22	DIGT002P	Boom Pin	1
23	NA	Cotter Pin 4x40	2
24	DIGT203	Gear Box Output Guard	1
25	NA	Inner Hex Flat Screw M10x20	2
26	NA	Hex Bolt 1/2"-13 UNC	2
27	NA	Nylon Lock Nut 1/2"-13 UNC	2
28	NA	Hex Bolt 3/8"-16 UNC	1
29	NA	Nylon Lock Nut 3/8"16 UNC	1
30	AUGT006	6 in. Auger with Screw Point and Cutting Edges	as required
	AUGT009	9 in. Auger with Screw Point and Cutting Edges	as required
	AUGT109	9 in. Heavy Duty Auger with Screw Point and Cutting Edges	as required
	AUGT012	12 in Auger with Screw Point and Cutting Edges	as required
	AUGT112	12in. HeavyDutyAuger withScrewPointandCuttingEdges	as required
	AUGT118	18 in Heavy Duty Auger	as required
	AUGT124	24 in Heavy Duty Auger	as required

NA - Common fasteners available through local hardware and farm stores.

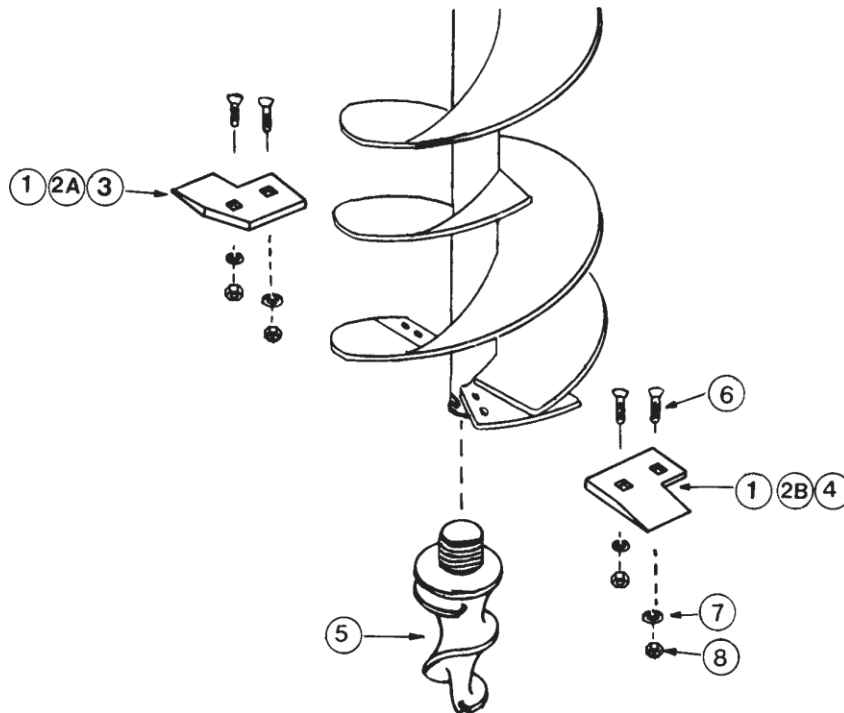
# MODEL 1000 DIGGER PARTS DIAGRAM



## CUTTING EDGES AND POINT PARTS BREAKDOWN

REFERENCE NUMBER	PART NUMBER	DESCRIPTION	NUMBER REQUIRED
1	AUGT206	6 in. Cutting Edge	2
2A	AUGT309	9 in. Outer Cutting Edge	1
2B	AUGT209	9 in. Inner Cutting Edge	1
3	AUGT312	12 in. Outer Cutting Edge	1
4	AUGT212	12 in. Inner Cutting Edge	1
5	AUGT101	Screw Point with 1-1/4 in. NC Threads	1
6	NA	3/8 in. NC x 1-1/4 Carriage Bolt	4
7	NA	3/8 in. Lockwasher	4
8	NA	3/8 in. NC Hex Nut	4
--	AUGT406	Heavy Duty Cutting Edge Pair	depends on auger size

NA- Common fasteners available through local hardware and farm stores



**ILLUSTRATION D**

**NOTE:** It is important to replace the self-sharpening point on the auger when it shows signs of excessive wear. Generally, the digging life of the point will be greater than that of the inner cutting edge. The digging life of the inner cutting edge will be greater than that of the outer cutting edge since it covers fewer inches of digging circumference.

# Registration

WARRANTY VOID IF REGISTRATION IS NOT MAILED WITHIN 15 DAYS OF RECEIVING ITEM.

Fill out this page and mail to the address below.  
Also found at [www.tooltuffdirect.com](http://www.tooltuffdirect.com)

Digger Model # \_\_\_\_\_

Purchase Date \_\_\_\_/\_\_\_\_/\_\_\_\_

Purchased From: \_\_\_\_\_ Purchaser: \_\_\_\_\_

Owner's Address: \_\_\_\_\_

City: \_\_\_\_\_ ST: \_\_\_\_\_ Zip Code: \_\_\_\_\_

Phone: \_\_\_\_\_ Email: \_\_\_\_\_

\*\*\*Attach a Copy of Proof of Purchase\*\*\*

### Acceptance of responsibility:

I (Purchaser) have read operators manual and Limited Warranty or someone has read/and explained all instructions to me. I understand this warranty does not cover any labor and that all disputes will be settled by binding arbitration. Warranty void if any attempt to repair or replace defective parts has been made by unauthorized personnel. I have received my Owner's Manual and fully understand the stipulations. The mark next to each item below confirms my acceptance of responsibility for the use and maintenance of this Post Hole Digger. I understand that I alone am responsible for proper maintenance, care and safe operation of this Post Hole Digger.

- Received and read or will read prior to use the Operators Manual, specifically the safety warnings
- Specifications accepted
- Controls understood
- Maintenance Requirements understood
- Storage of Digger

I (purchaser) also understand that persons not familiar with the operation of this equipment should not be allowed to use it. Children especially should not operate or be near equipment. ANYONE OPERATING EQUIPMENT SHOULD HAVE READ ALL EQUIPMENT OPERATIONS MANUALS AND SAFETY MANUALS.

Is this Post Hole Digger used in a business NO \_\_\_\_\_ YES If yes, business type: \_\_\_\_\_

Owners Signature: x \_\_\_\_\_ Date: \_\_\_\_/\_\_\_\_/\_\_\_\_

It is recommended that a copy of the registration be given to the seller.

You must sign this warranty and mail copy to **AgKNX, 15000 W 44th Avenue Suite B. Golden, CO, 80403**. This warranty is not effective unless the Purchaser mails this Registration and Warranty Form **within 15 days of purchase**. NOTE: The Manufacturer may refuse warranty of any kind unless AgKNX receives a completed, legible and signed warranty registration. It is the responsibility of the purchaser to assure that this registration document is received by AgKNX.



## SPECIFICATIONS

Tractor Category	Category 1 or 2
Gear Box	Special alloy pinion gears and tapered roller bearings on both sides of each gear
Gears	Heat-treated to Rockwell C30-40 to a depth of .030-.040 Equipped with quick-tach yoke to fit standard 6-spline PTO (completely shielded)
Cutting edges	Beveled, high carbon steel, replaceable
Augers	6 in., 9 in. and 12 in. sizes available that all dig to a full depth of 45 in. Anti-auger plates to prevent it from screwing into soft soils. *Model 1000 can also use heavy duty 6, 9, 12, 18, 24 in. augers.
Boom	2-7/8 in. O.D. high strength tubing *Model 1000 has rib for reinforcement
A-frame	2-7/8 in. high strength tubing
Safety shields	On driveline, gear box "U" joint and gear box output shaft
Shear pin	On input shaft to protect driveline, auger and gears. Replaceable.



AgKNX  
15000 W 44<sup>th</sup> Ave Ste B  
Golden, CO 80403  
720-437-7640  
info@tooltuffdirect.com